



Flat 1 6 Westbourne Grove

, Redcar, TS10 1EH

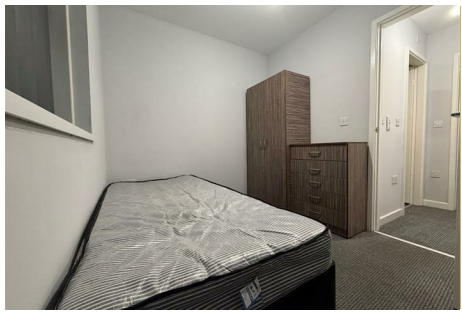
£500 PCM



Flat 1 6 Westbourne Grove

, Redcar, TS10 1EH

£500 PCM



Kitchen/ Reception Room

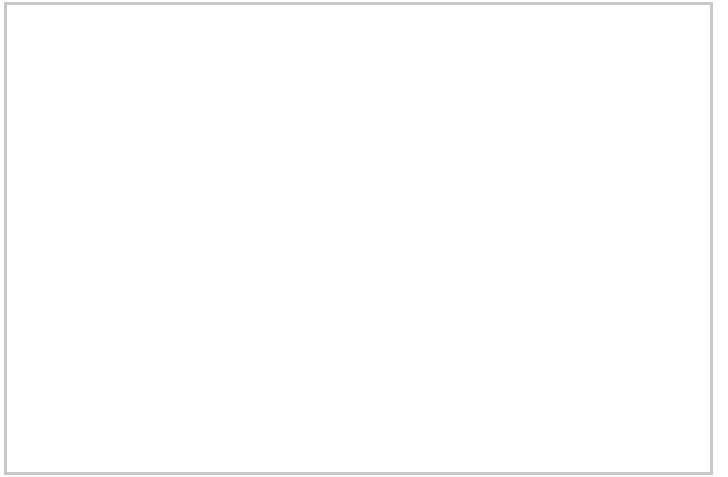
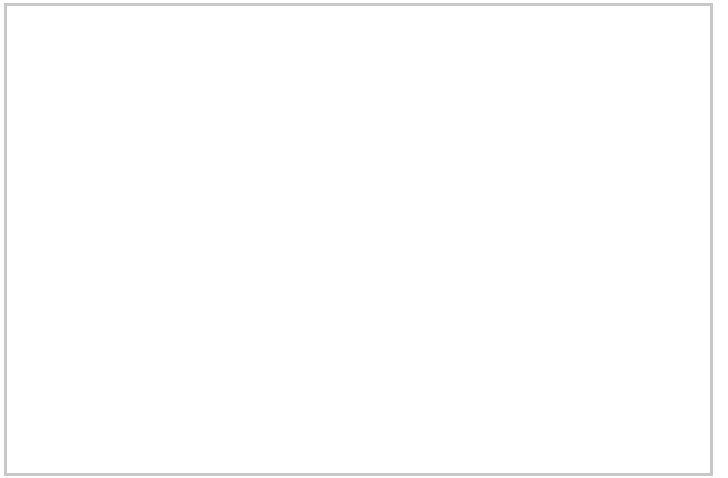
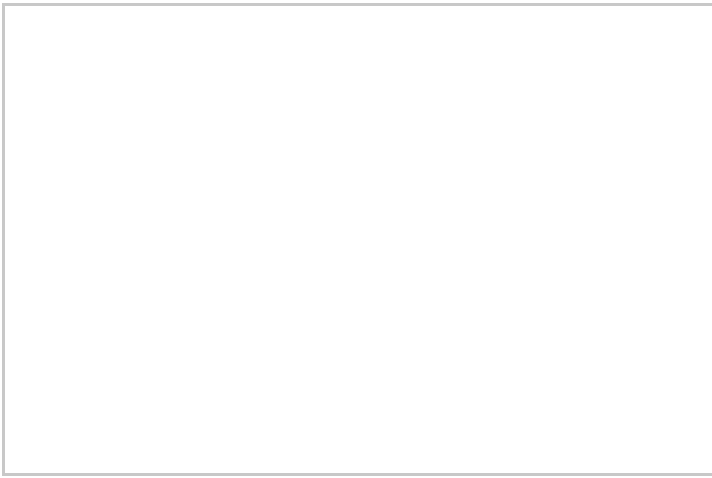
The property benefits from an open plan kitchen and reception room, providing a functional and sociable living space. The kitchen is fitted with a range of wall and base units, ample work surfaces, oven and hob, fridge/freezer and washing machine. There is space for seating, making it suitable for both relaxing and dining.

Bedroom

The bedroom is separate from the living area and offers space for a double bed along with additional storage furniture, creating a comfortable and private sleeping area.

Bathroom

The bathroom is also separate and comprises a shower enclosure, WC and wash hand basin, finished in a clean and neutral style.



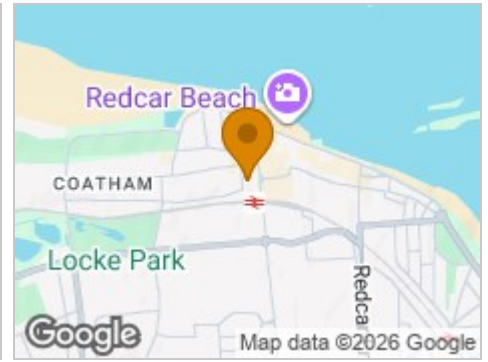
Road Map



Hybrid Map



Terrain Map



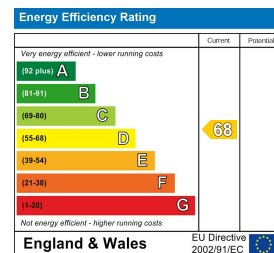
Floor Plan



Viewing

Please contact our Redcar Office on 01642 688814 if you wish to arrange a viewing appointment for this property or require further information.

Energy Efficiency Graph



These particulars, whilst believed to be accurate are set out as a general outline only for guidance and do not constitute any part of an offer or contract. Intending purchasers should not rely on them as statements of representation of fact, but must satisfy themselves by inspection or otherwise as to their accuracy. No person in this firm's employment has the authority to make or give any representation or warranty in respect of the property.